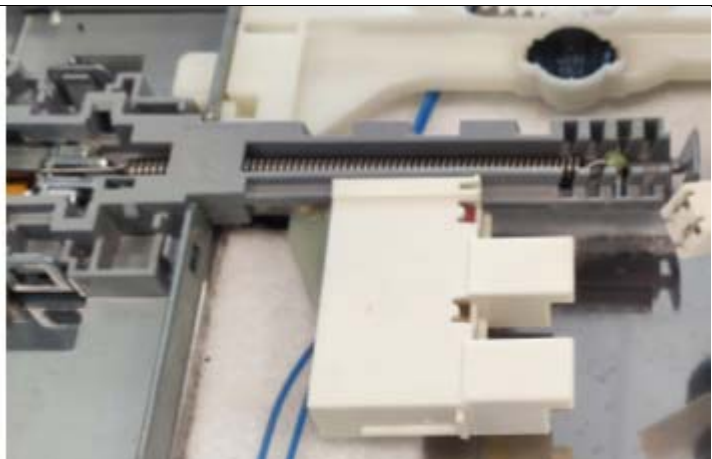


VERSION	00	First version	July 2025
----------------	----	---------------	-----------

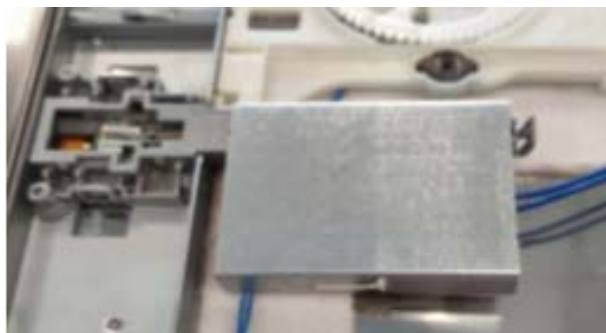
Document nr.	LVS TI2025-01-00- LOCK KIT-EN
Brand	ALL
models involved	All domestic dishwashers with lock on tub (spare part code 697690348/ 690074493) equipped with a microswitch.
Cause	For technical improvement, to prevent connector damage due to incorrect handling, a kit dedicated to service, code 69613C416 is introduced, compatible with all dishwashers combined to the current document.
Description of the modification	Order the LOCK KIT FOR SERVICE, code 69613C416 (equipped with a non-removable metal cover).
Date of introduction	The lock kit 69613C416 won't be used in production, it was created as spare part solely for service.
Interchangeability	TOTAL: può essere utilizzato su tutte le macchine che montavano i codici 697690348 e 690074493, tranne nelle macchine provviste di accumulatore.

➤ **NECESSARY TOOLS**

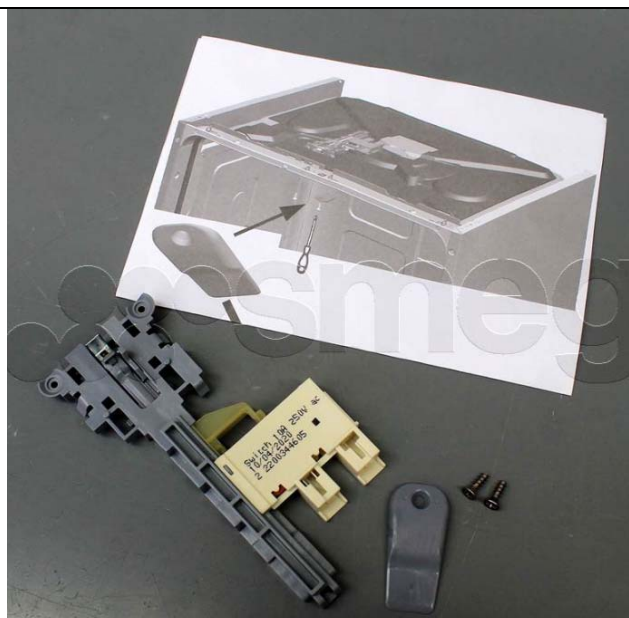
		
GLOVES	TOOL NR.1 Phillips screwdriver	TOOL NR.2 Flat blade screwdriver
	Scissors	
		Wire stripping



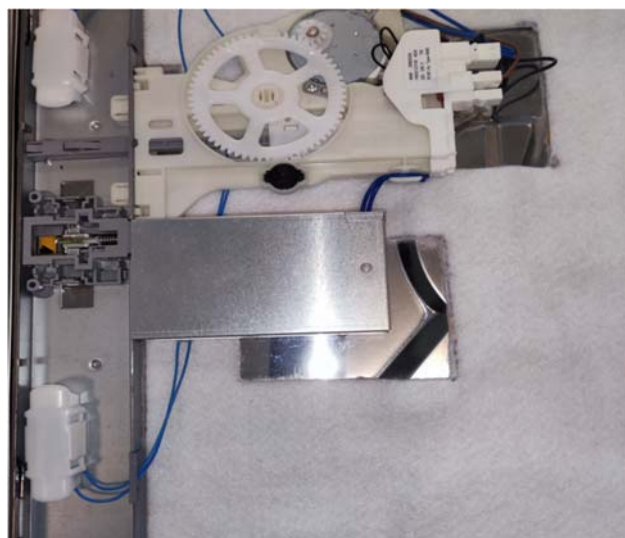
Lock kit configuration, on the product, code 697690348, or 690074493, before the technical intervention.



New configuration lock kit, on the product, code 69613C416



Old spare part detail



Detail, new lock assembly KIT, code 69613C416

DISCONNECT THE PRODUCT FROM THE ELECTRICAL AND WATER SUPPLY BEFORE CARRYING OUT ANY FURTHER OPERATIONS



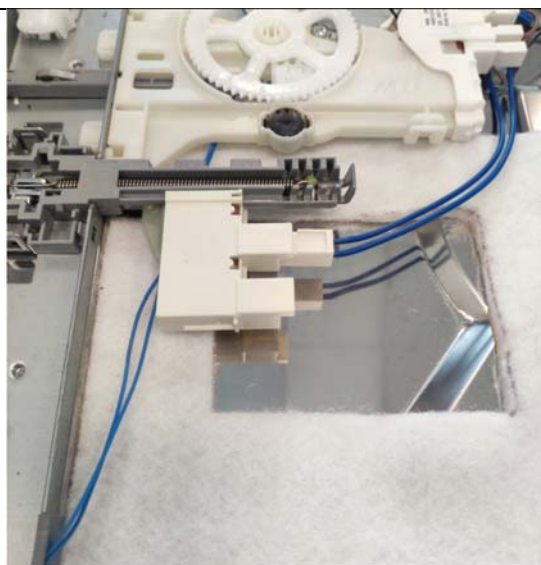
1. Initially, remove the Top, unscrew the circled screws located at the back of the product.



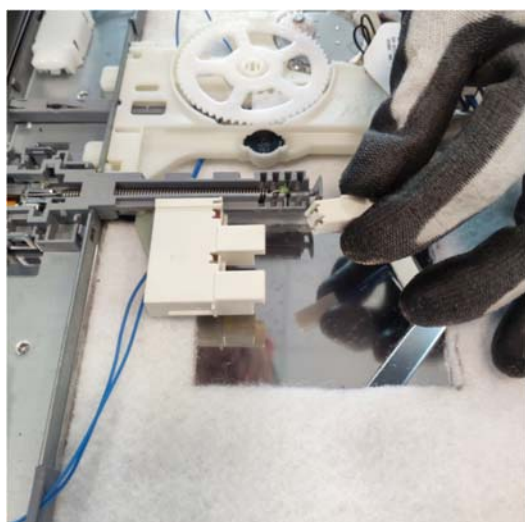
2. Lift the Top to remove it



3. Lift the metallic cover, if present



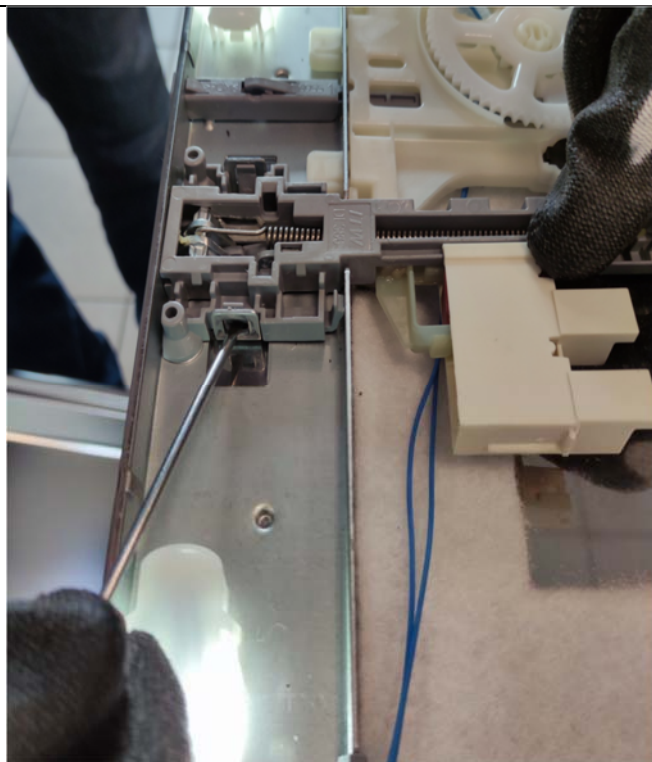
4. Disconnect the micro



5. Disconnect the connector



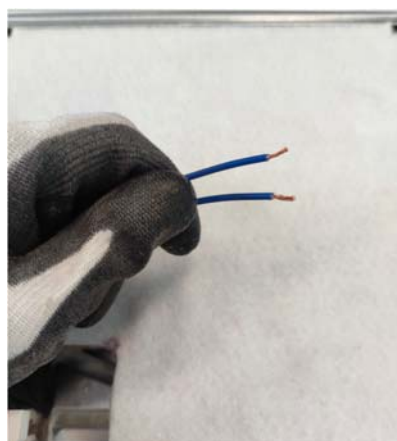
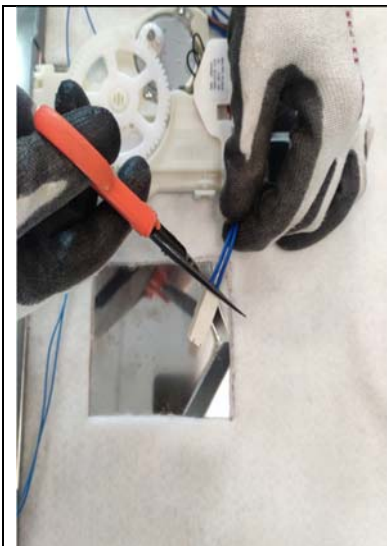
6. Remove the lock fixing screws



7. with the too nr.2, unhook as it is shown in the photo above.



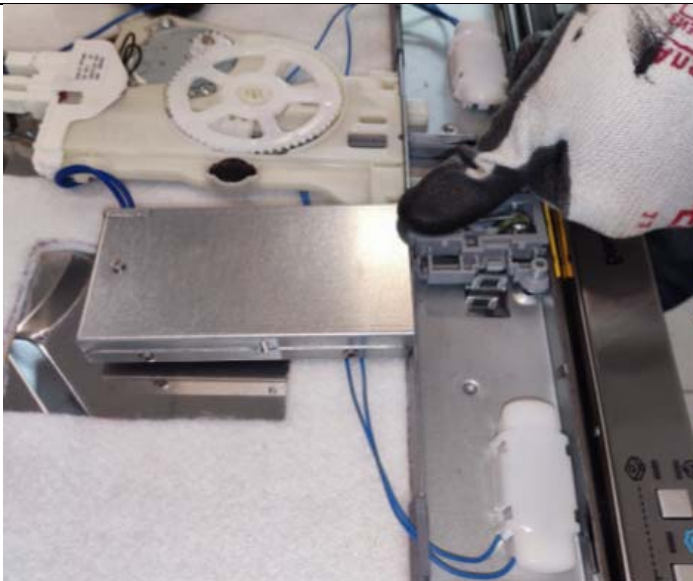
8. Then cut the wiring as shown below



9. 10.11 Cut and strip wires for 8mm then cut the wiring indicated below.

Assembly

12.13 Connect the wiring to the clamps of the new lock, code **69613C416**



14.15 Hook and screw the new lock

16.The new lock has been assembled correctly.

